



Dear Default Value,

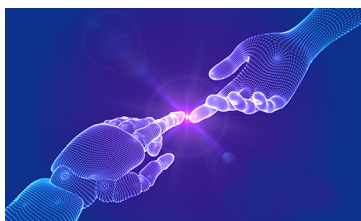
## Welcome to SOAIS Newsletter of July 2021!



Worksoft Certify Version 12.0.2106.24 has been released early this month. This version contains some exciting new features, one of them being, the **New Process Debug Tool**. The process debug tool in the process editor enables developers to debug the process while editing it. By debugging the process in the Editor, your debugging environment is maintained until you close Certify. You are able to open multiple process editor windows simultaneously, set a value for a variable in one process and the value of the variable will be available in the second process.

Click [here](#) to connect with us to get more information on our services.

### What's New in Worksoft Certify 12.0.2106.24



**Connective Automation -** Gain comprehensive insights and unmatched reusability with the only automation platform that seamlessly integrates process intelligence, testing, and RPA.

Please [click](#) here to watch the video to get an insight.

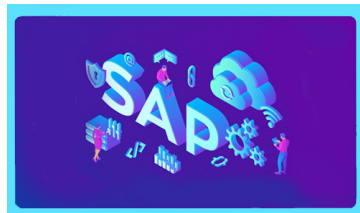
### SOAIS Blog – Microsoft Edge Configuration for Automation



Worksoft Certify 11 and above supports automation of web applications using Microsoft Edge. But, before starting automation, we need to make sure that certain configurations and settings are there in place for Windows operating system and the Edge browser so that Certify recognizes Edge and Edge accepts commands from the Certify Web Interface.

Please click [here](#) to read the complete blog.

### Worksoft Blog – 6 Dos and Dont's to Prepare for Your SAP S/4HANA Migration



The transition to SAP S/4HANA is one that any organization using SAP will eventually have to make, and the better prepared your business is, the more smoothly your migration will go. While the end of maintenance deadline for SAP ECC has been extended from its original 2025 deadline, SAP reports that more than 16,000 subscribers have already made the transition to SAP S/4HANA to take advantage of advanced analytics, lower ROI costs, better integration with other SAP products and improved end-user and business satisfaction.

Please click [here](#) and read the complete blog.

#### India

Unit 9, Level 5, Navigator, ITPL,  
Bangalore - 560 066.  
Phone: +91 80 40071234

#### US

Suite 101, 1979, N Mill St,  
Naperville, IL 60563  
Phone 1-800-262-2427