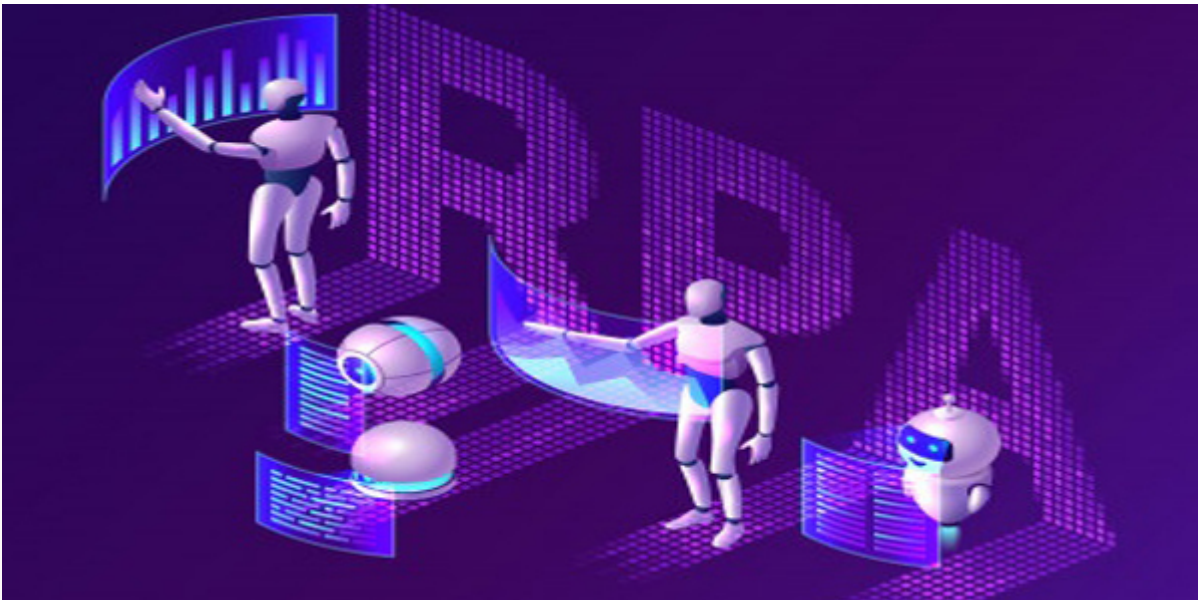




Dear Default Value,

## Welcome to SOAIS Newsletter of August 2021!



SOAIS offers implementation of RPA technology consisting of both services and software robots to Customers that allows them to transact in any given IT application, legacy systems, website or mainframe for automating complex and rule-based work. We understand customer needs and offer suitable cognitive automation as solutions.

SOAIS supports the evolution of digital transformation of businesses for the clients through process automation. This allows the organizations to utilize humans effectively, stick to the SLA and deliver quality services in minimum time.

Click [here](#) to know more about our services.

### Now streaming SOAIS Blogs



The calculation of Return on investment (ROI) is the ultimate measure of success, especially when it comes to automation initiatives that directly impact various areas of business continuity – from reduced cash cycle to customer satisfaction level.

It is a prevailing view that calculating ROI in RPA projects is a complicated idea. However, nothing worthwhile comes easily, and if you strive to make informed strategic decisions based on figures, you need to be able to calculate ROI in your automation projects.

Click [here](#) to read the blog.

### Case study –Accounts payable Automation within SAP



The client wanted to digitally transform Accounts Payable from a collection of loosely linked solutions to a vertically integrated system. This required SAP Task and process Automation and all associated documents and metadata to be digitally available both inside and outside of SAP.

SOAIS found an off-the-shelf solution in docuflow that integrate their NEW ECM system with SAP to automate Accounts Payable process. In addition, docuflow provided more advanced metadata synchronization, workflow Automation and overall SAP Content linking and archiving throughout multiple departments.

### UiPath's Latest Technology Updates



UIPATH Announces New Platform Features for AI-Powered Discovery, Enterprise Management and Governance to scale Automation for Every User. The UiPath Platform leverages AI and enables discovery of automation opportunities that have the highest impact on the most important business KPIs.

Click [here](#) to know more.

#### India

Unit 9, Level 5, Navigator, ITPL,  
Bangalore - 560 066.  
Phone: +91 80 40071234

#### US

Suite 101, 1979, N Mill St,  
Naperville, IL 60563  
Phone 1-800-262-2427