

# **Crystal Reports**

## **For**

# **PeopleSoft Enterprise**

**SOAIS**

Putting Customer First

# Highlights

---

- ❖ Introduction
  - ❖ Advantages
  - ❖ Architecture
  - ❖ Report Creation
  - ❖ Summary
-

# Crystal Report - Introduction

---

It is a BI application used to design and generate reports from a wide range of data sources.

Crystal Services Inc.,	1.0 – 3.0
Seagate Software (Crystal Decisions)	4.0 – 9.0
Business Objects (Dec 2003)	10.0 – 12.0
SAP October08, 2007.	

---

# Crystal Reports - Advantages

---

- ❖ Broad Data Access
  - ❖ Flexible Formatting
  - ❖ End-user Interactivity
  - ❖ Effective Report Maintenance and Publishing
-

# Crystal Reports - Advantages

---

## ❖ Broad Data Access

### ➤ Access to any Data Source

Unique or multiple data sources.

### ➤ Control Over Data Access

Query of Crystal Reports or Own SQL

Store key report objects

---

# Crystal Reports - Advantages

- Access to any Data Source

<b>Databases</b>	<b>Spread Sheets</b>	<b>Groupware Applications</b>
Sybase	MS Excel	Lotus Notes
IBM DB2	Text Files	MS Exchange
MS Access	XML Files	Novell GroupWise
MS SQL Server		
My SQL		
Interbase		
Oracle		

- Can also connect to any other data source accessible through a web service, ODBC, JDBC or OLAP.

# Crystal Reports - Advantages

---

## ❖ Flexible Formatting

### ➤ Visual Design Environment

Drag and drop interface, Object oriented explorers

### ➤ Powerful Formula Language

160 Built-in functions , operators, Special Fields  
User defined functions, Codeless wizard

### ➤ Rich Data Presentation

Layout and design controls – Professional appearance.  
Custom Graphs and maps increases graphical impact.

---

# Crystal Reports - Advantages

---

- ❖ End-user Interactivity
    - Guided Navigation
    - Multiple Export Formats
    - Parameters and Alerting
-

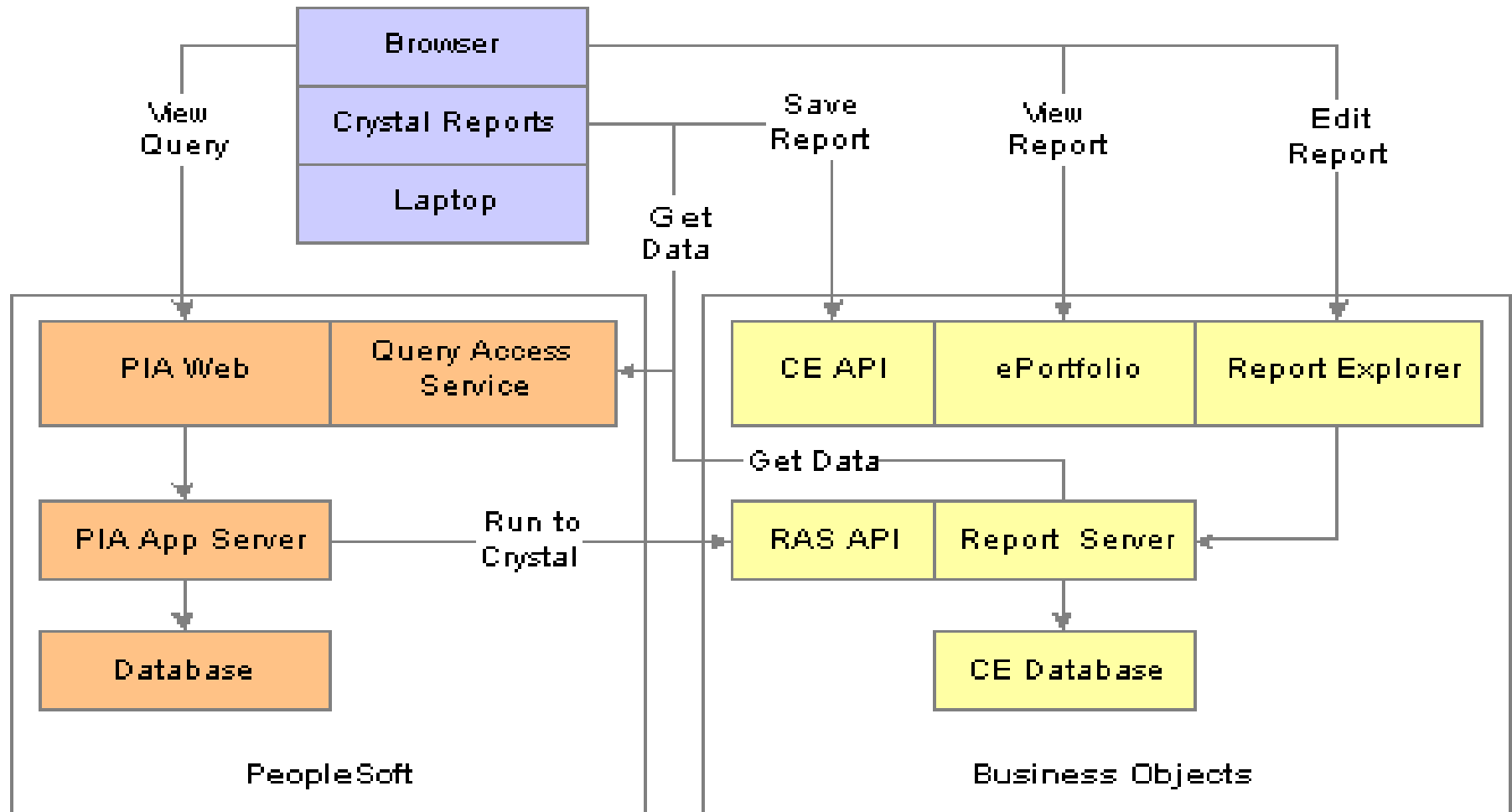


# Crystal Reports - Advantages

---

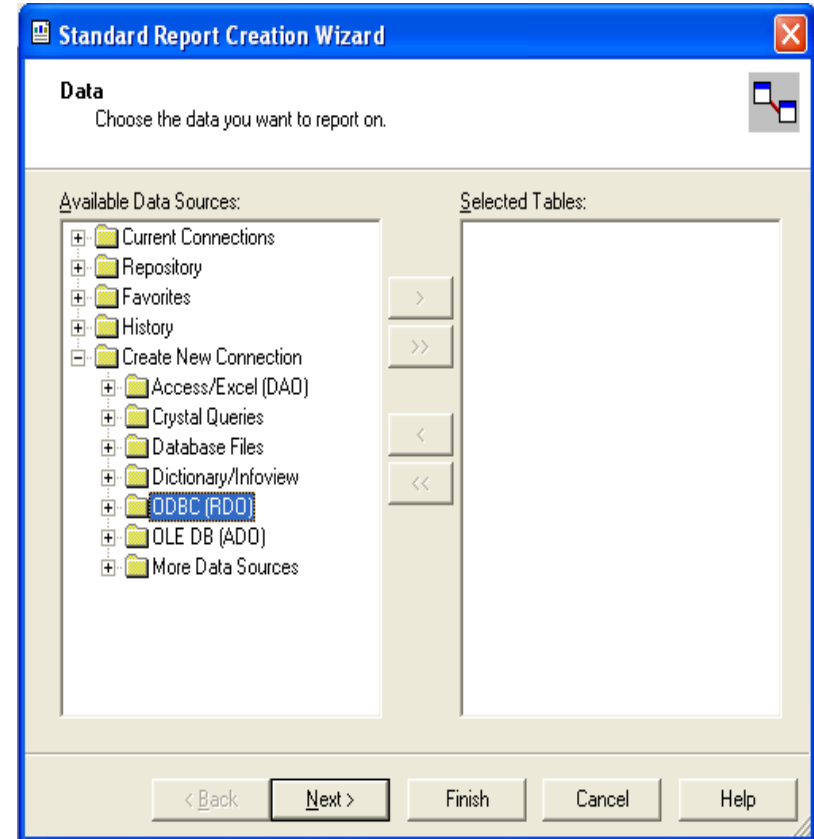
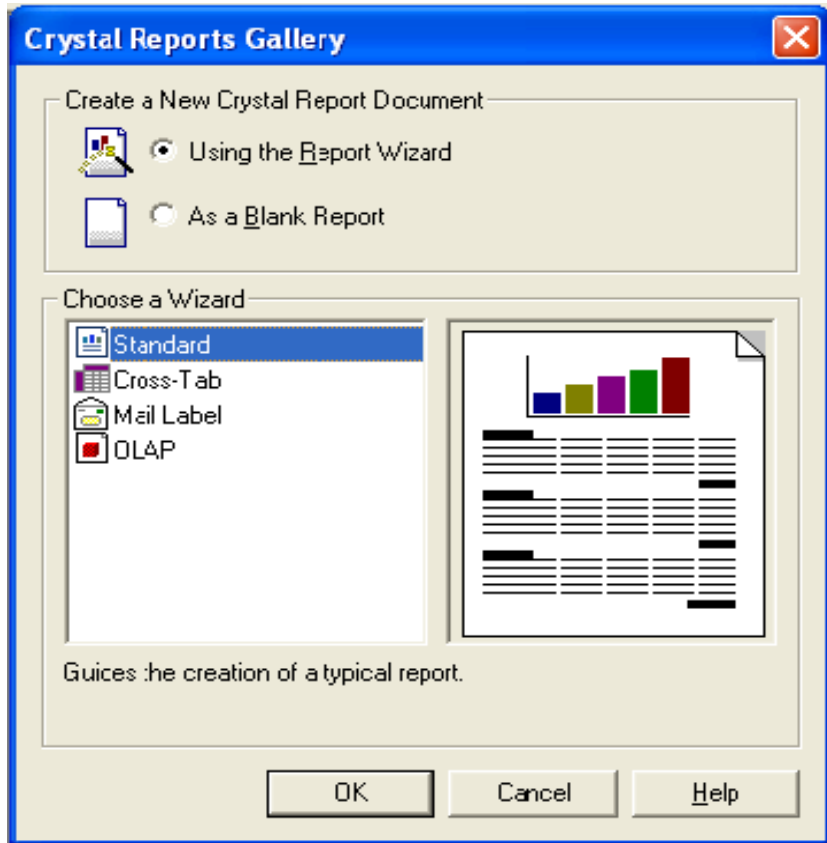
- ❖ Effective Report Maintenance and Publishing
  - Managed Repository
  - Publish to the Web

# Crystal Reports - Architecture



# Accessing the Data Source and creating a report

## Navigation: Select Start, Programs, Crystal Reports



# Accessing the Data Source and creating a report

**ODBC (RDO)**

**Data Source Selection**  
Choose a data source from the list or open a file dsn from the browse button

Select Data Source:

Data Source Name:

- Crystal Repository
- dBASE Files
- Excel Files
- MS Access Database
- PeopleSoft PeopleTools**
- SDB
- Xtreme Sample Database 9

Find File DSN:

File DSN:

Enter Connection String:

Connection String:

< Back   **Next >**   Finish   Cancel   Help

Click on Next and Finish

**ORACLE** PeopleTools 8.48

Enter Signon Information Below:

Connection Type: DB2 UDB for Unix, NT

Database Name: SDB

User ID: PS

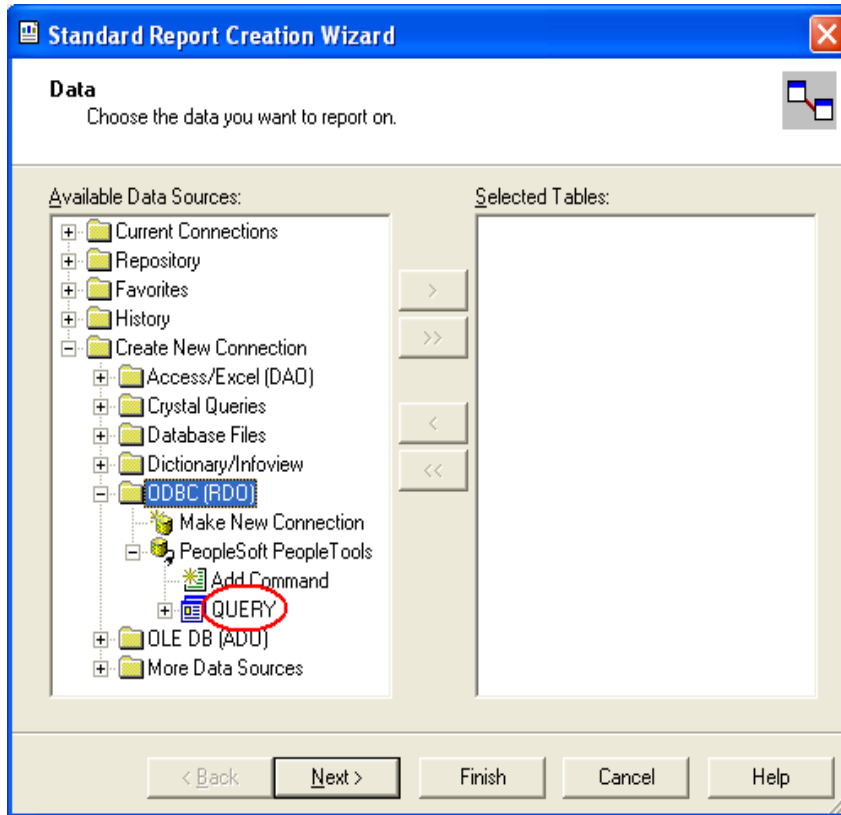
Password: \*\*\*

OK   Cancel

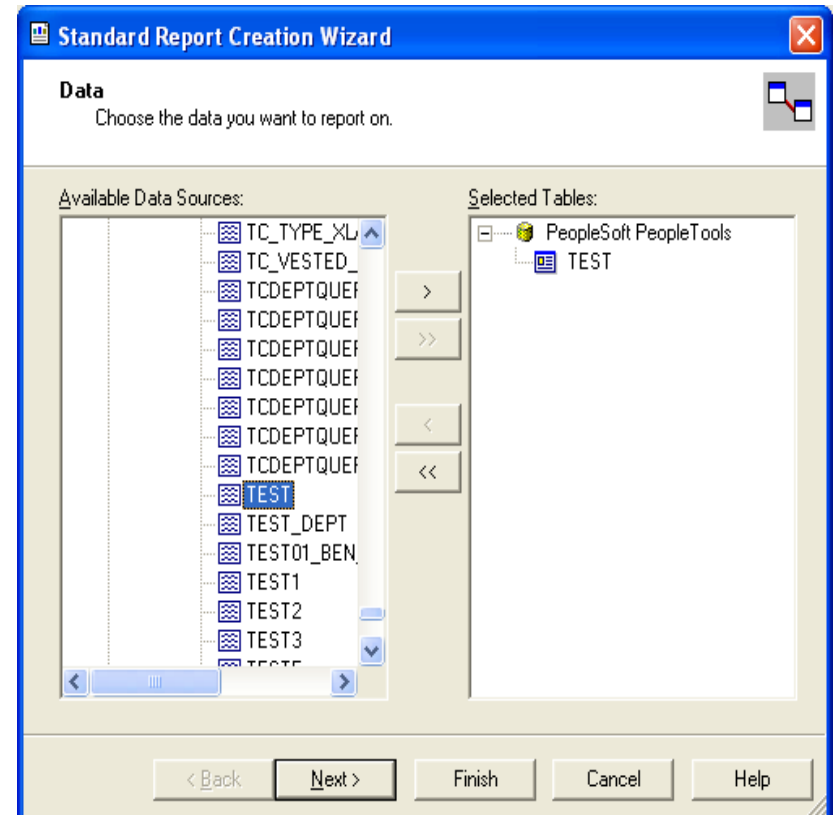
Copyright © 1988, 2006, Oracle. All rights reserved. PeopleSoft is a registered trademark of Oracle Corporation and/or its affiliates. Other names may be trademarks of their respective owners.



Enter password and click on OK button.

# Accessing the Data Source and creating a report

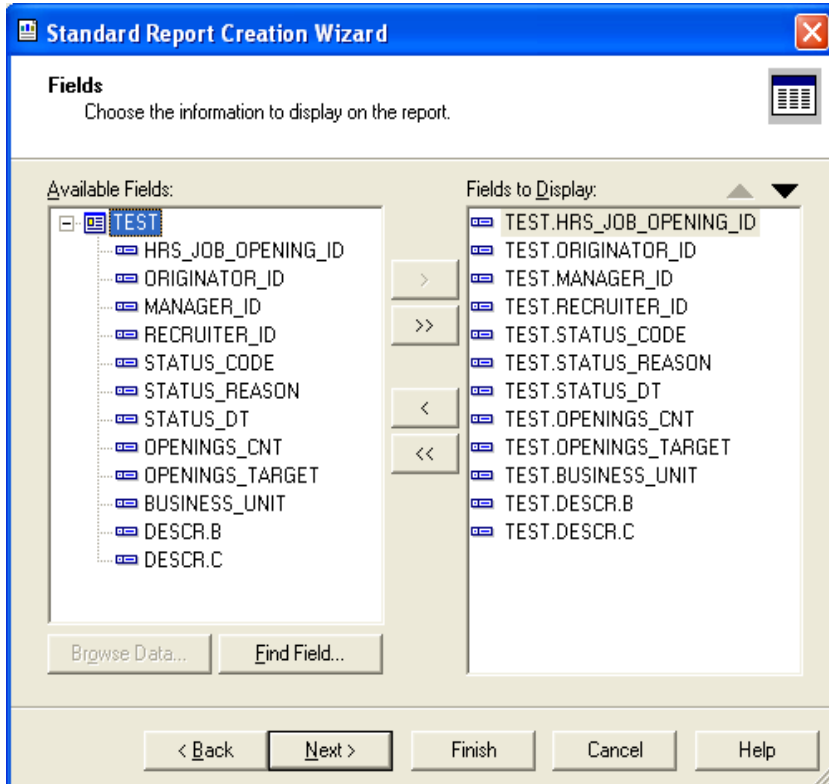


Click on Query – A list of all saved queries are listed

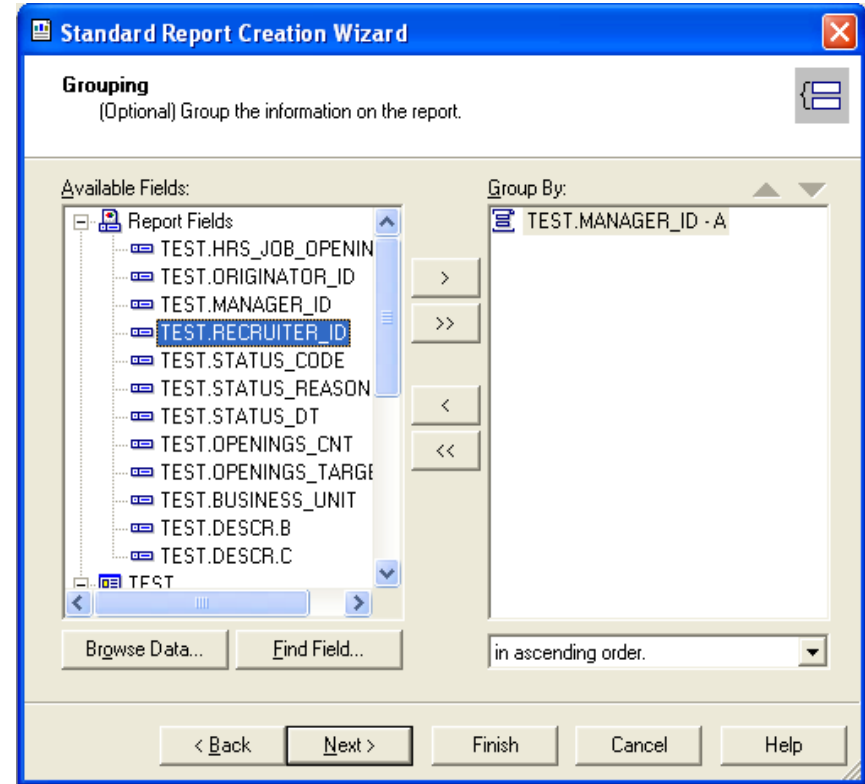


Select a Query and Click on  and  button.

# Accessing the Data Source and creating a report

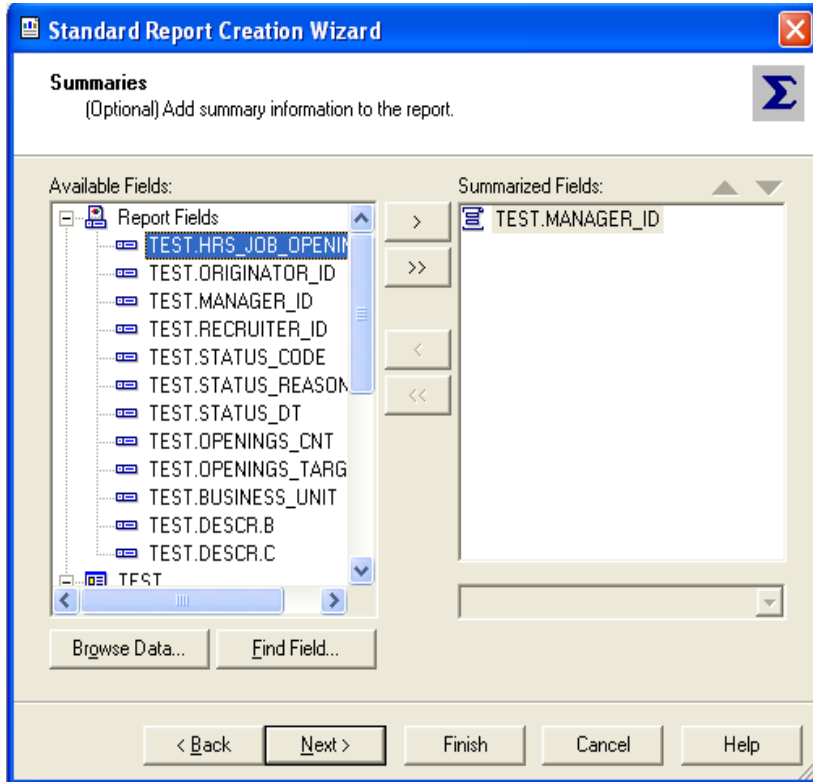



Select the fields to be displayed on the report and Click on  and  Buttons.

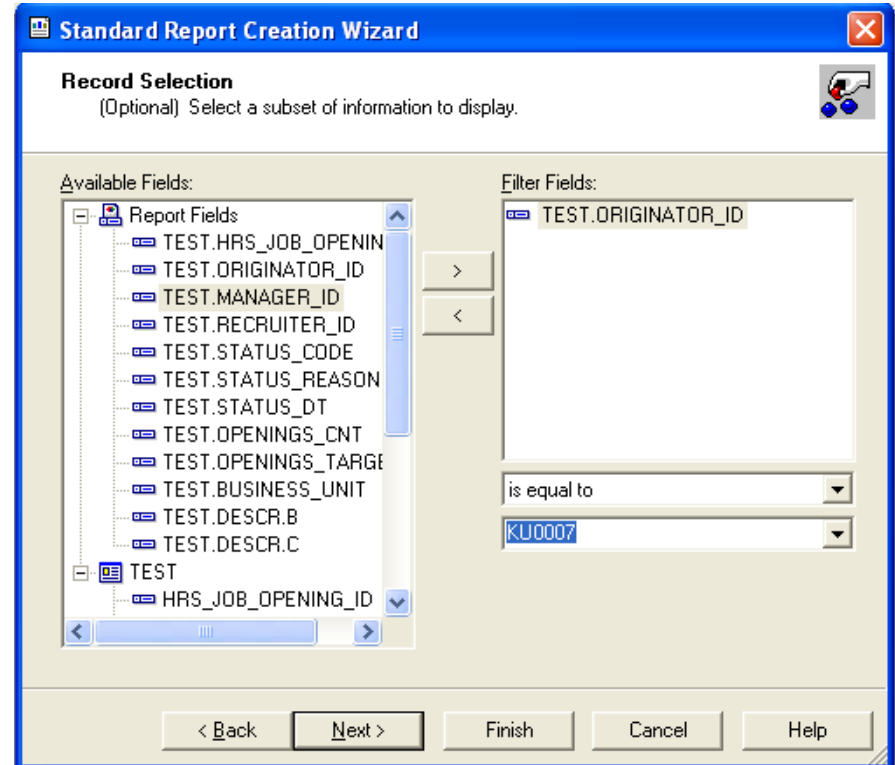


Select the fields to Group the information on the report and Click  and  buttons.

# Accessing the Data Source and creating a report

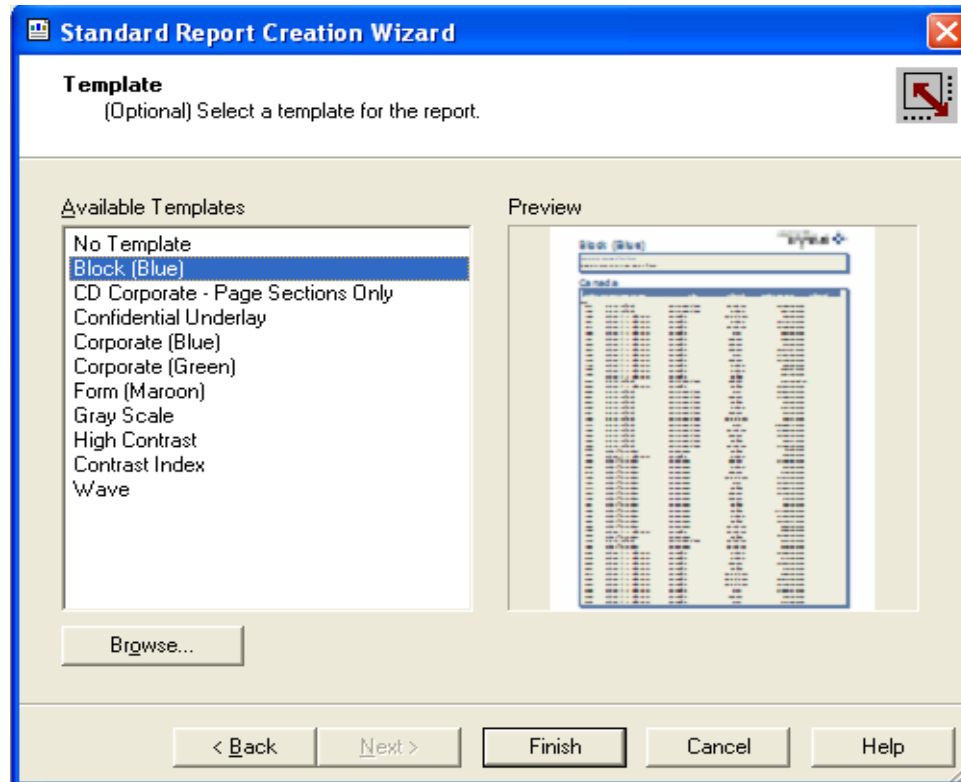


Select the field(s) by which data needs to be summarized and click on  button.



Include any filters that need to be applied to the report and click on .

# Accessing the Data Source and creating a report



Select any Template of your choice and click on  button.



# Generated Report

Crystal Reports - [Report1]

File Edit View Insert Format Database Report Window Help

ab

Design Preview Today 10:54 X 1 of 1

2/12/2009

<u>MANAG</u>	<u>HRS</u>	<u>JOB</u>	<u>ORIGINA</u>	<u>RECRUI</u>	<u>STATUS</u>	<u>STATUS</u>	<u>STATUS</u>	<u>OPENIN</u>	<u>OPENING</u>	<u>BUSINESS</u>	<u>DESCR.B</u>
<u>ER_ID</u>	<u>OPENING</u>	<u>TOR_ID</u>	<u>TER_ID</u>	<u>CODE</u>	<u>REASON</u>	<u>DI</u>	<u>GS_CNT</u>	<u>S_TARG</u>	<u>UNIT</u>		
	<u>ID</u>							<u>ET</u>			
<b><u>KU0068</u></b>											
KU0068	35,010.00	KU0007	KU0108	010	010	8/26/2003	1.00	1.00	GBIBU		010 Open
KU0068	35,009.00	KU0007	KU0108	010	010	8/26/2003	1.00	1.00	GBIBU		010 Open
KU0068	35,008.00	KU0007	KU0108	010	010	8/26/2003	1.00	1.00	GBIBU		010 Open
KU0068	35,007.00	KU0007	KU0108	010	010	8/26/2003	1.00	1.00	GBIBU		010 Open
KU0068	35,006.00	KU0007	KU0108	010	010	8/26/2003	1.00	1.00	GBIBU		010 Open
KU0068	35,005.00	KU0007	KU0108	010	010	8/26/2003	1.00	1.00	GBIBU		010 Open
KU0068	35,000.00	KU0007	KU0108	010	050	9/13/2004	1.00	1.00	GBIBU		010 Open

# About SOAIS

---

SOAIS is a provider of Enterprise IT and Process outsourcing solutions. Since its inception SOAIS has expanded at a tremendous pace and has garnered customers from both mid-market segment and Fortune 100 companies. We have experience in managing ERP applications as well as in providing high value services around packaged enterprise applications such as PeopleSoft and Oracle. Our experience in the business process outsourcing area fully extends our services footprint to provide end to end enterprise wide solutions.

***Please feel free to clarify queries or provide feedback on this presentation at <http://www.soais.com/askexpert.html>***

---