

Crystal Reports For PeopleSoft Enterprise

SOAIS

Putting Customer First

Highlights

- ❖ Introduction
 - ❖ Advantages
 - ❖ Architecture
 - ❖ Report Creation
 - ❖ Summary
-

Crystal Report - Introduction

It is a BI application used to design and generate reports from a wide range of data sources.

Crystal Services Inc.,	1.0 – 3.0
Seagate Software (Crystal Decisions)	4.0 – 9.0
Business Objects (Dec 2003)	10.0 – 12.0
SAP October08, 2007.	

Crystal Reports - Advantages

- ❖ Broad Data Access
 - ❖ Flexible Formatting
 - ❖ End-user Interactivity
 - ❖ Effective Report Maintenance and Publishing
-

Crystal Reports - Advantages

❖ Broad Data Access

➤ Access to any Data Source

Unique or multiple data sources.

➤ Control Over Data Access

Query of Crystal Reports or Own SQL

Store key report objects

Crystal Reports - Advantages

- Access to any Data Source

Databases	Spread Sheets	Groupware Applications
Sybase	MS Excel	Lotus Notes
IBM DB2	Text Files	MS Exchange
MS Access	XML Files	Novell GroupWise
MS SQL Server		
My SQL		
Interbase		
Oracle		

- Can also connect to any other data source accessible through a web service, ODBC, JDBC or OLAP.

Crystal Reports - Advantages

❖ Flexible Formatting

➤ Visual Design Environment

Drag and drop interface, Object oriented explorers

➤ Powerful Formula Language

160 Built-in functions , operators, Special Fields
User defined functions, Codeless wizard

➤ Rich Data Presentation

Layout and design controls – Professional appearance.
Custom Graphs and maps increases graphical impact.

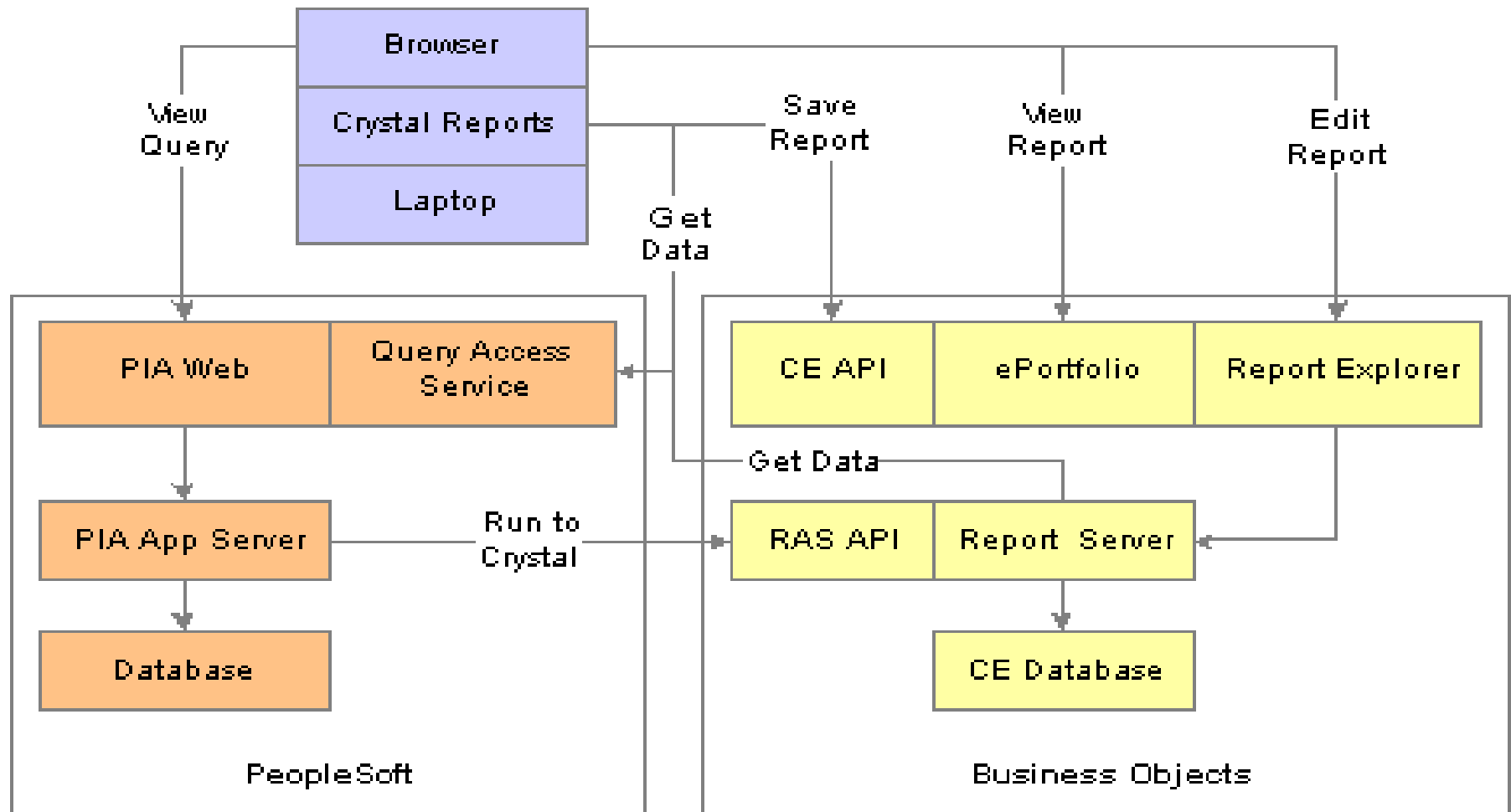
Crystal Reports - Advantages

- ❖ End-user Interactivity
 - Guided Navigation
 - Multiple Export Formats
 - Parameters and Alerting
-

Crystal Reports - Advantages

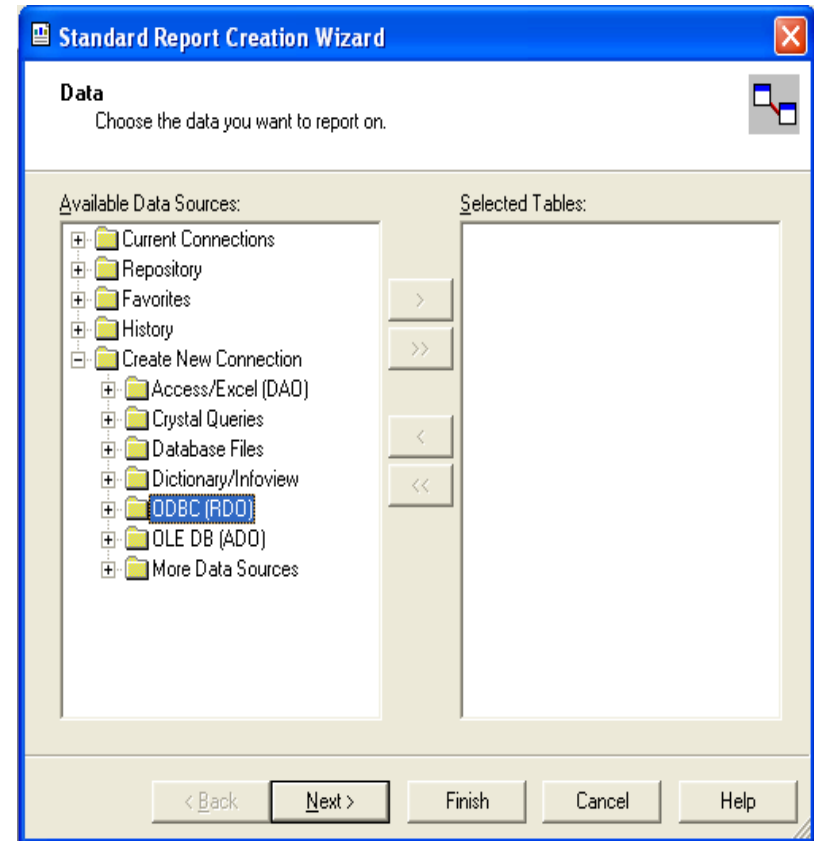
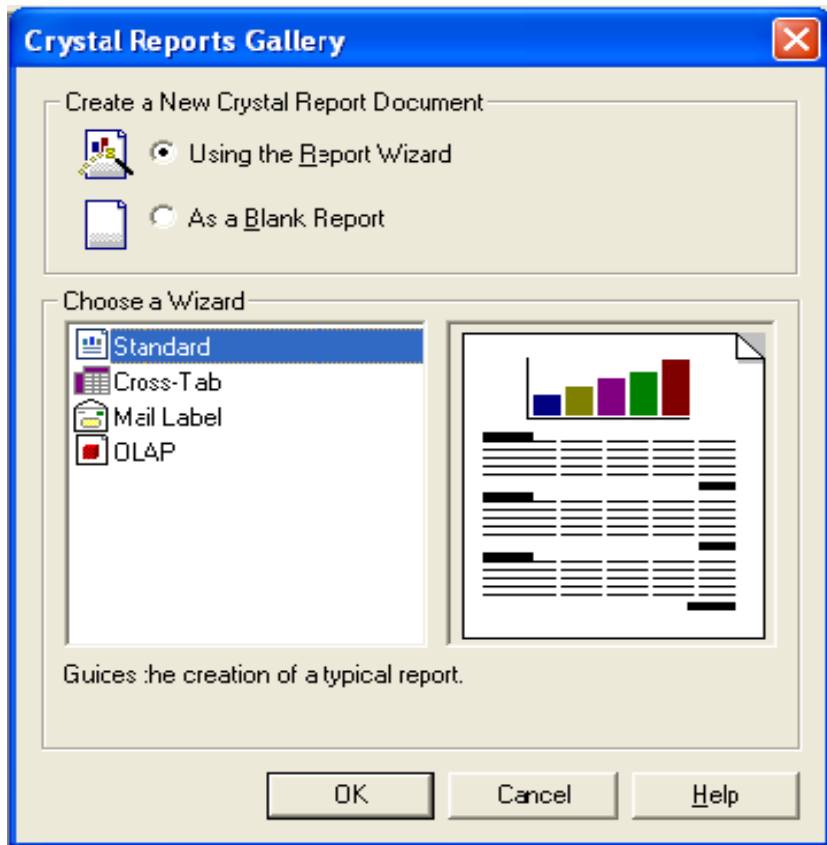
- ❖ Effective Report Maintenance and Publishing
 - Managed Repository
 - Publish to the Web

Crystal Reports - Architecture



Accessing the Data Source and creating a report

Navigation: Select Start, Programs, Crystal Reports



Accessing the Data Source and creating a report

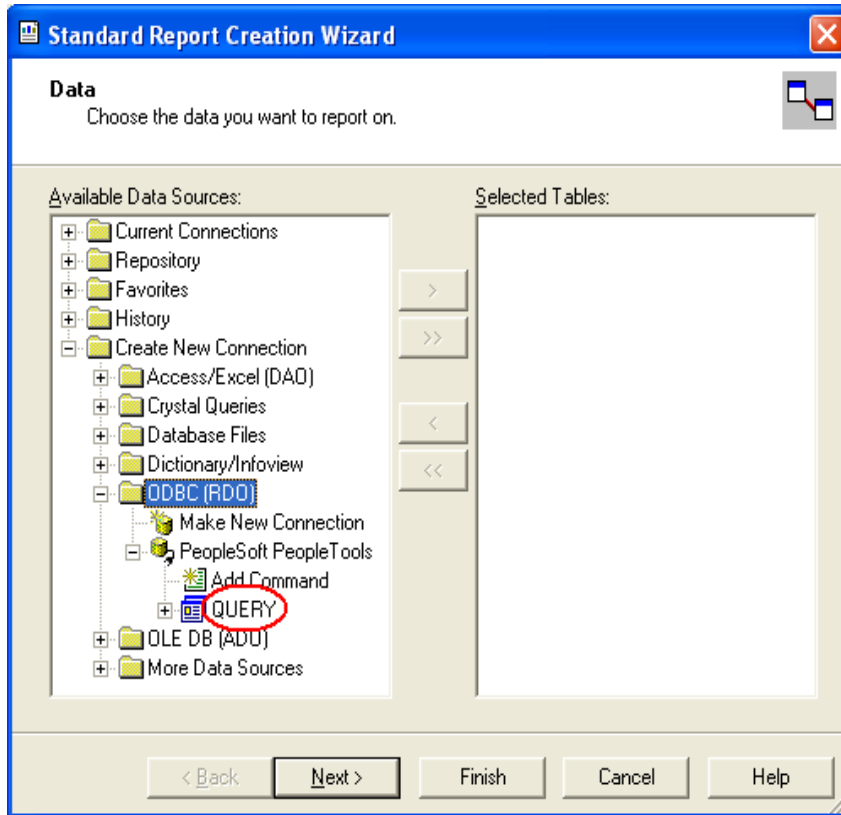
The screenshot shows the 'ODBC (RDO)' dialog box with the 'Data Source Selection' tab active. The instruction reads: 'Choose a data source from the list or open a file dsn from the browse button'. Under 'Select Data Source:', the radio button is selected. The 'Data Source Name:' list contains the following items: Crystal Repository, dBASE Files, Excel Files, MS Access Database, **PeopleSoft PeopleTools** (highlighted), SDB, and Xtreme Sample Database 9. Below this list, the 'Find File DSN:' radio button is unselected. The 'File DSN:' field is empty. The 'Enter Connection String:' radio button is unselected. The 'Connection String:' field is empty. At the bottom, there are five buttons: '< Back', 'Next >', 'Finish', 'Cancel', and 'Help'.

Click on Next and Finish

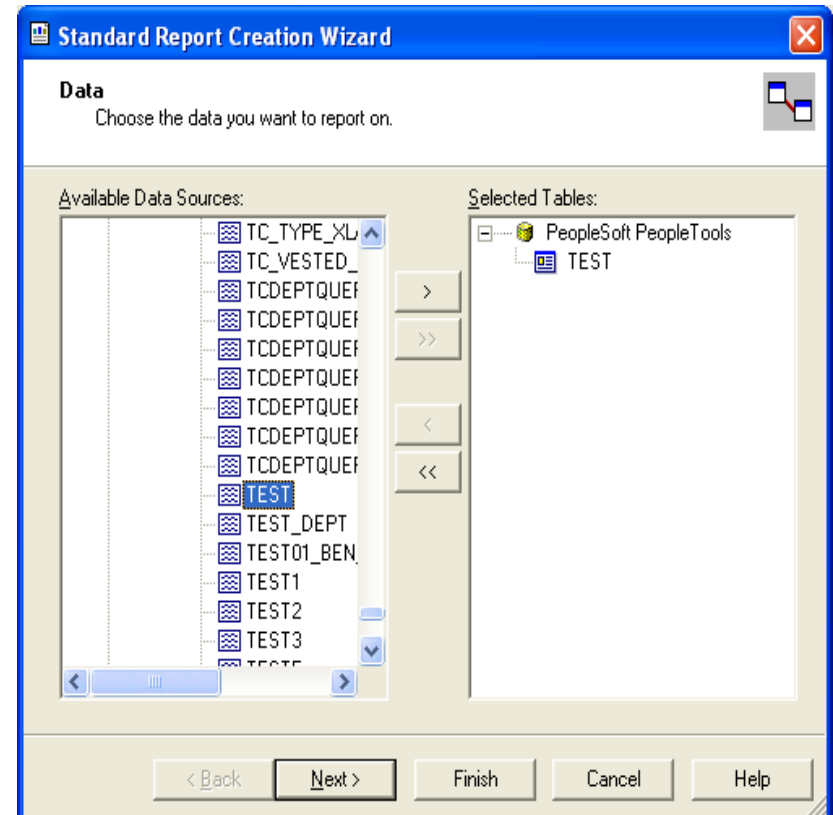
The screenshot shows the 'Signon' dialog box for Oracle PeopleTools 8.48. The title bar says 'Signon' and the top right corner says 'PeopleTools 8.48'. The instruction reads: 'Enter Signon Information Below:'. The 'Connection Type:' dropdown menu is set to 'DB2 UDB for Unix, NT'. The 'Database Name:' text box contains 'SDB'. The 'User ID:' text box contains 'PS'. The 'Password:' text box contains '***'. At the bottom, there are two buttons: 'OK' and 'Cancel'. A copyright notice at the bottom reads: 'Copyright © 1988, 2006, Oracle. All rights reserved. PeopleSoft is a registered trademark of Oracle Corporation and/or its affiliates. Other names may be trademarks of their respective owners.'



Enter password and click on OK button.

Accessing the Data Source and creating a report

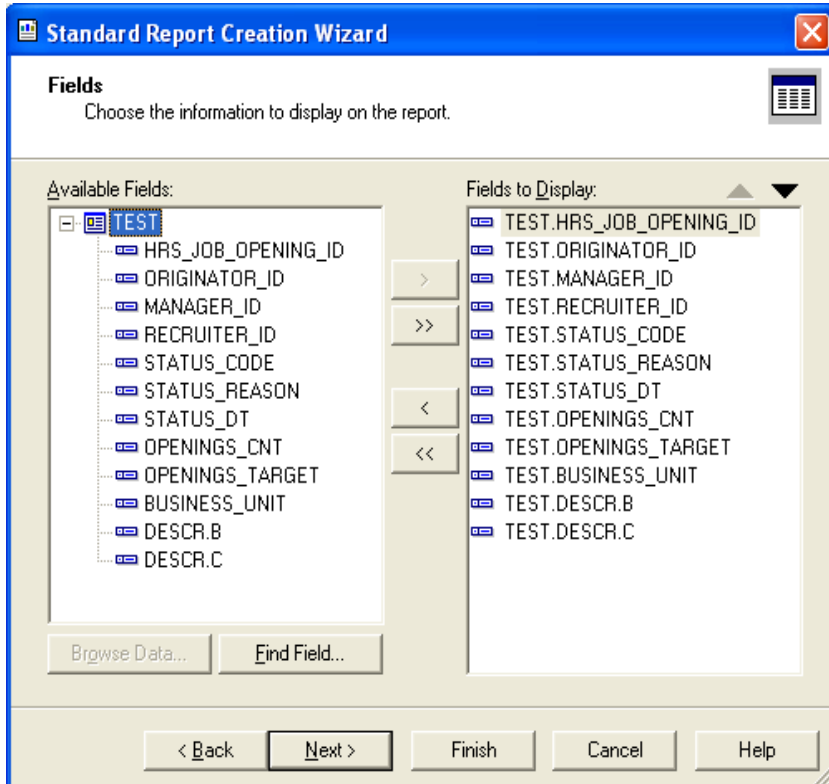


Click on Query – A list of all saved queries are listed

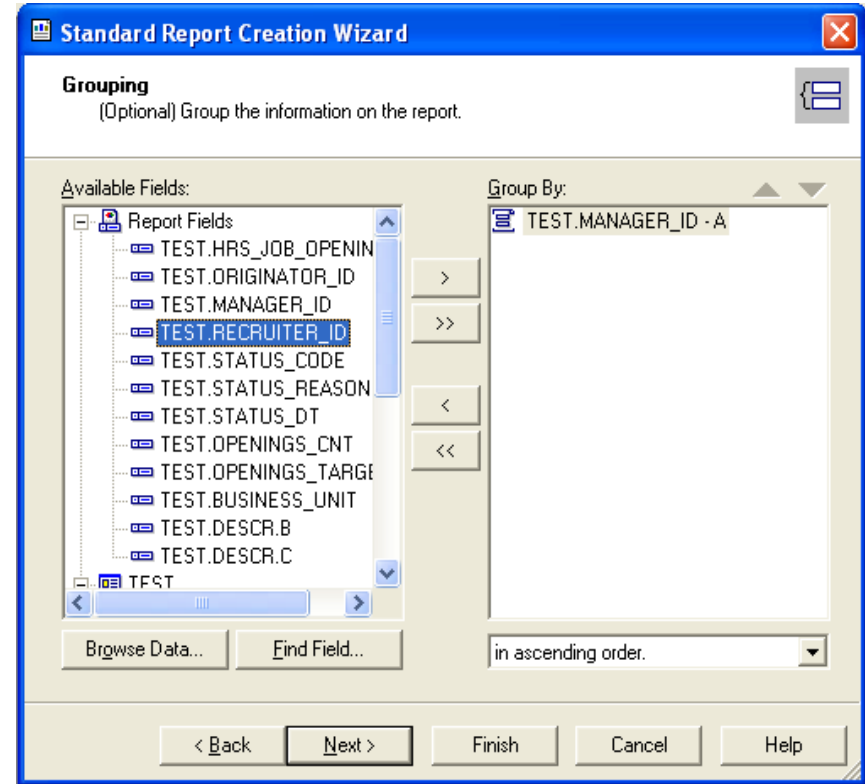


Select a Query and Click on  and  button.

Accessing the Data Source and creating a report

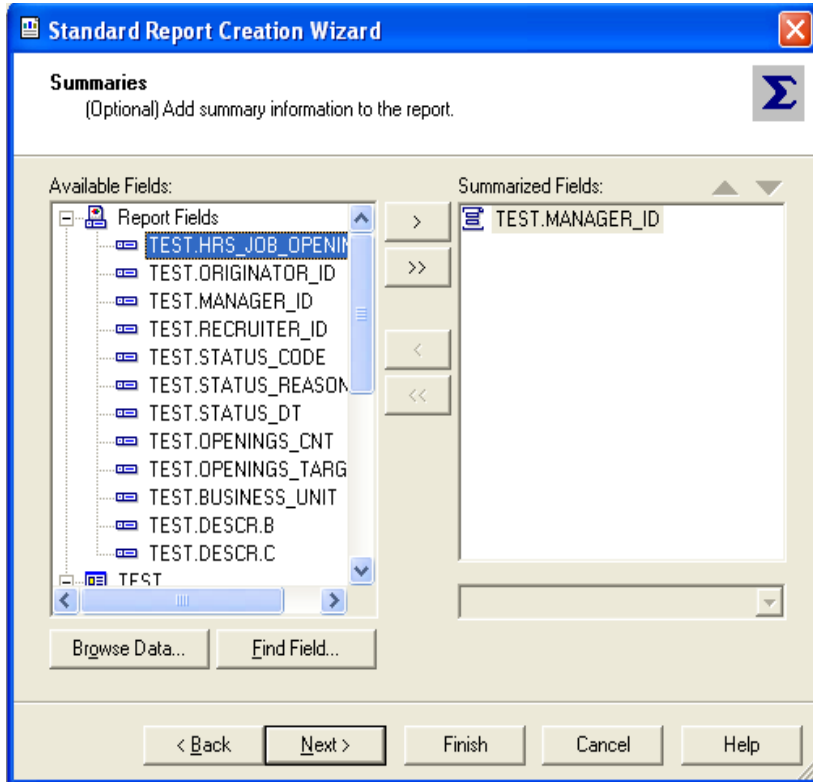



Select the fields to be displayed on the report and Click on  and  Buttons.

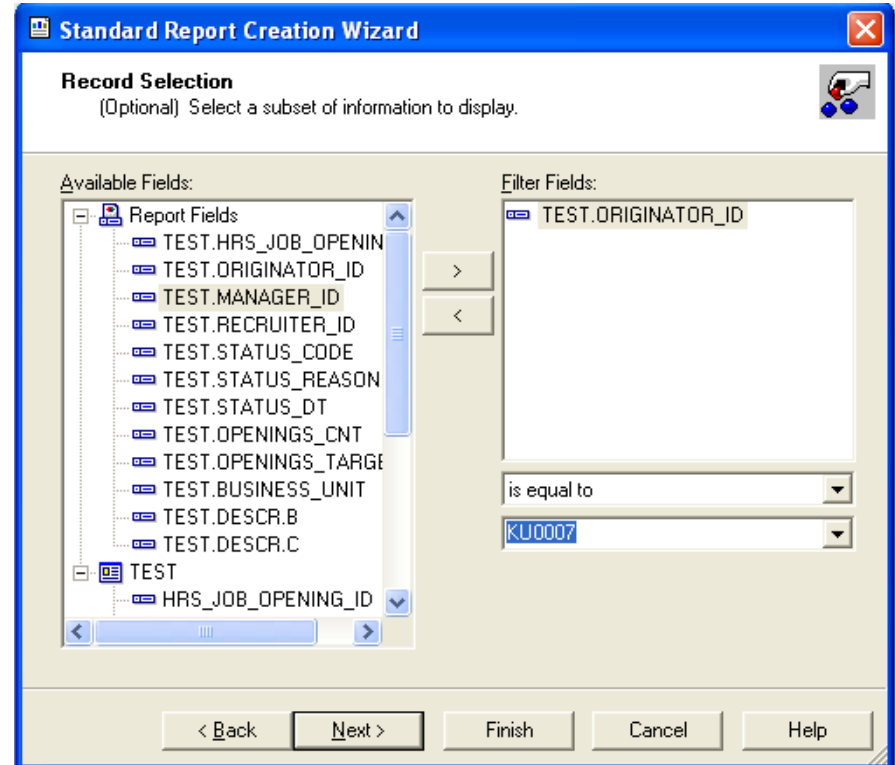


Select the fields to Group the information on the report and Click  and  buttons.

Accessing the Data Source and creating a report

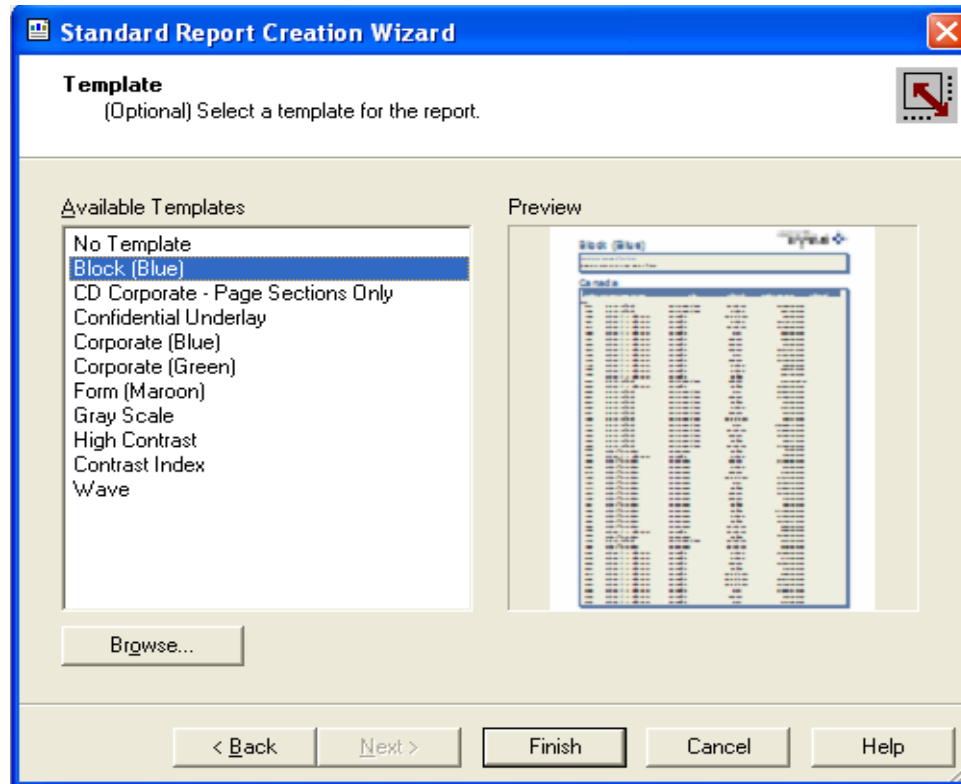


Select the field(s) by which data needs to be summarized and click on  button.



Include any filters that need to be applied to the report and click on .

Accessing the Data Source and creating a report



Select any Template of your choice and click on  button.

Generated Report

Crystal Reports - [Report1]

File Edit View Insert Format Database Report Window Help

ab

Design Preview Today 10:54 X 1 of 1

2/12/2009

<u>MANAG</u>	<u>HRS</u>	<u>JOB</u>	<u>ORIGINA</u>	<u>RECRUI</u>	<u>STATUS</u>	<u>STATUS</u>	<u>STATUS</u>	<u>OPENIN</u>	<u>OPENING</u>	<u>BUSINESS</u>	<u>DESCR.B</u>
<u>ER_ID</u>	<u>OPENING</u>	<u>TOR_ID</u>	<u>TER_ID</u>	<u>CODE</u>	<u>REASON</u>	<u>DI</u>	<u>GS_CNT</u>	<u>S_TARG</u>	<u>UNIT</u>		
	<u>ID</u>							<u>ET</u>			
<u>KU0068</u>											
KU0068	35,010.00	KU0007	KU0108	010	010	8/26/2003	1.00	1.00	GBIBU	010 Open	
KU0068	35,009.00	KU0007	KU0108	010	010	8/26/2003	1.00	1.00	GBIBU	010 Open	
KU0068	35,008.00	KU0007	KU0108	010	010	8/26/2003	1.00	1.00	GBIBU	010 Open	
KU0068	35,007.00	KU0007	KU0108	010	010	8/26/2003	1.00	1.00	GBIBU	010 Open	
KU0068	35,006.00	KU0007	KU0108	010	010	8/26/2003	1.00	1.00	GBIBU	010 Open	
KU0068	35,005.00	KU0007	KU0108	010	010	8/26/2003	1.00	1.00	GBIBU	010 Open	
KU0068	35,000.00	KU0007	KU0108	010	050	9/13/2004	1.00	1.00	GBIBU	010 Open	

About SOAIS

SOAIS is a provider of Enterprise IT and Process outsourcing solutions. Since its inception SOAIS has expanded at a tremendous pace and has garnered customers from both mid-market segment and Fortune 100 companies. We have experience in managing ERP applications as well as in providing high value services around packaged enterprise applications such as PeopleSoft and Oracle. Our experience in the business process outsourcing area fully extends our services footprint to provide end to end enterprise wide solutions.

Please feel free to clarify queries or provide feedback on this presentation at <http://www.soais.com/askexpert.html>
